

# Oral Fluid Test for COVID-19 Antibody

## Quick Reference Guide

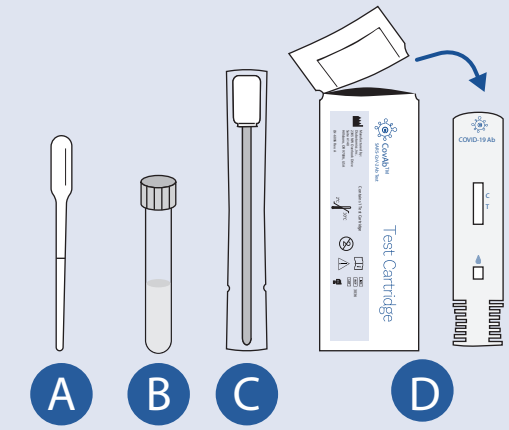
*(Read complete instructions for use)*

- For Emergency Use Authorization (EUA) only
- For prescription use only
- For in vitro diagnostic use only

**1** Patient should not eat or drink 30 minutes prior to testing. Open the kit and identify the components.

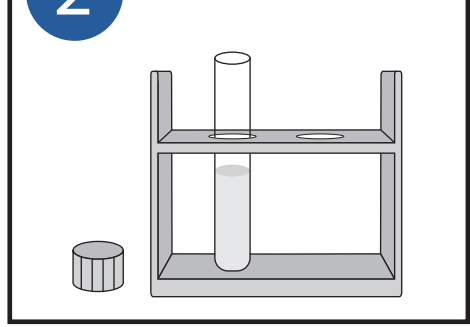
**Each box of fifty (50) tests contains 50 Single Test Kits. Each Single CovAb™ SARS-CoV-2 Ab Test Kit contains:**

- A. One (1) transfer pipette
- B. One (1) capped tube with sample solution
- C. One (1) packaged oral swab
- D. One (1) foil package with one Test Cartridge and one desiccant

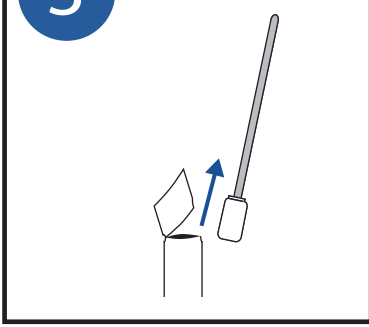


Required but not provided: Timer, Tube rack

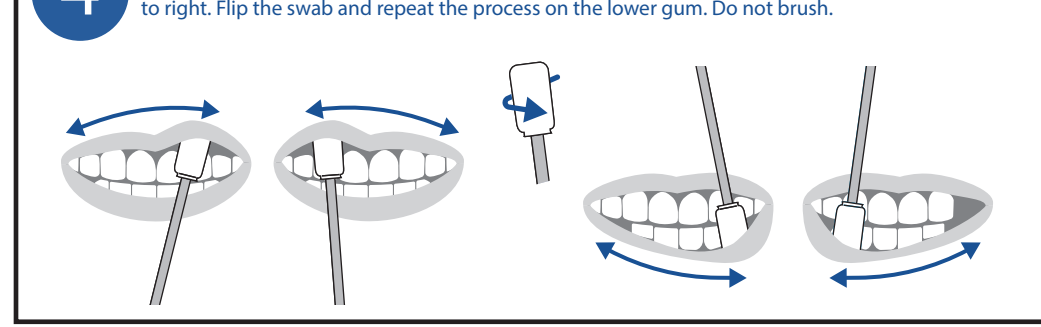
**2** Open the sample collection tube and place it in a tube rack.



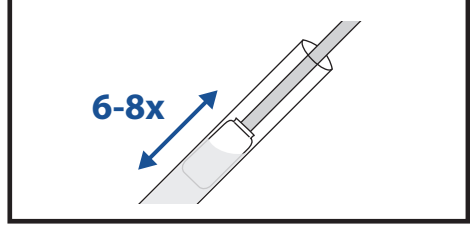
**3** Remove the oral swab from its packaging.



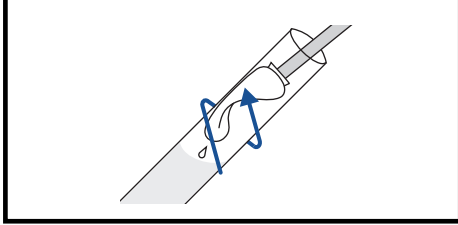
**4** Place the swab head against the upper gum line. Apply moderate pressure and slowly wipe the swab across the gum line from right to left all the way to the back of the mouth and then repeat left to right. Flip the swab and repeat the process on the lower gum. Do not brush.



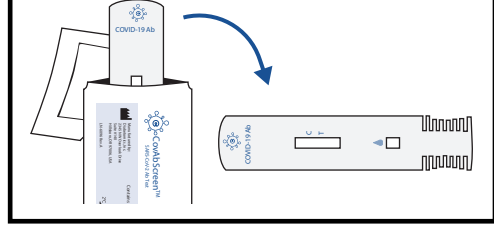
**5** Carefully, without splashing, insert the swab into the liquid in the tube and gently push the swab up and down 6-8 times to release and mix the oral fluid.



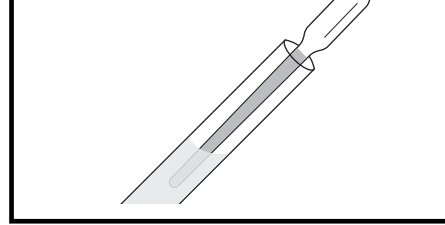
**6** Squeeze as much liquid from the swab as possible by pressing each side of the swab 2-3 times against the inside of the tube above the level of liquid. Remove and discard the swab.



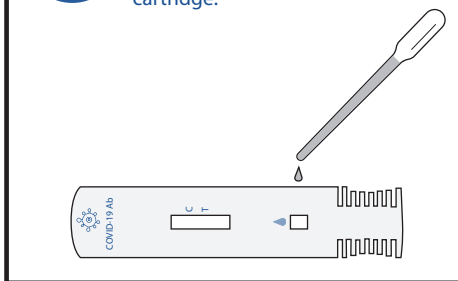
**7** Remove the Test Cartridge from its packaging and place it on a level surface. Dispose of the desiccant. Do not use expired Test Cartridge.



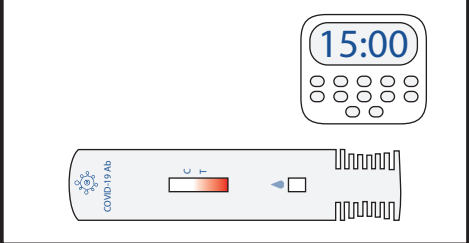
**8** Use the transfer pipette to collect the liquid sample until the line marking. Press the bulb completely and release to fill the pipette.



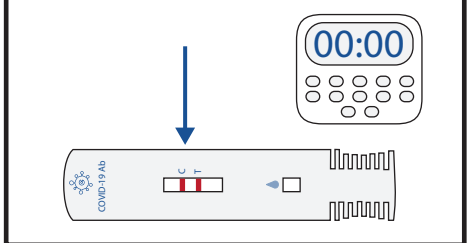
**9** Slowly press the bulb of the pipette to transfer 5 drops of the liquid sample to the sample port on the cartridge.




**10** Start a timer for 15 minutes and allow the test to run.



**11** At 15 minutes, evaluate the lines in the reading window on the Test Cartridge. Do not read after 20 minutes.



**12 Interpretation of Test Results**



If there are two lines, both C and T (even faint test lines), the test is positive for antibodies to COVID-19

If there is only a C line, the test is negative for antibodies to COVID-19

If there is no C line, the test is invalid and the test should be repeated with a new kit.

Dispose of the kit and materials in biohazard waster container.